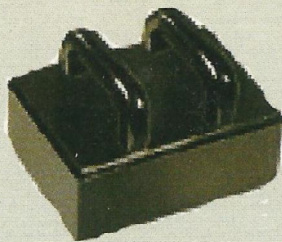


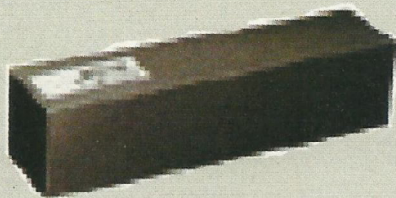
# Machine Diagnostics & Commutator Maintenance



**Hand Held Resurfacers** ▶

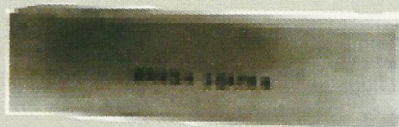
- For use on large rotary converters, large engine driven generators and very large motors
- Double handles for two-hand control
- Available in five grades
- **X** = Extra Course - very fast cutting, for "hogging" off excess copper
- **C** = Course - fast cutting
- **M** = Medium - for general use, high mica, small ridges and burns
- **F** = Finish - for use after the three grades above, for periodic application and for removing small burns and ridges immediately after their appearance
- **P** = Polish - very fine grade for burnish finish

- Gentle abrasive for seating carbon brushes and cleaning commutators and slip rings
- Soft loosely bound grain produces a scouring effect when held against commutator
- Will not scratch or remove copper
- Self-cleaning
- Available in soft (S), medium (M), and hard (H) grades.



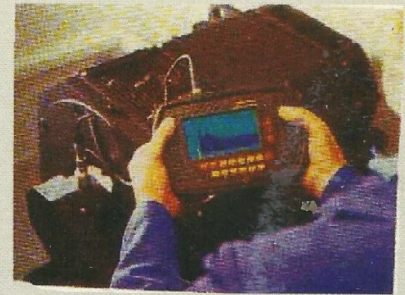
**Resurfacers for Grinder** ▶

- Fine-grain, non-dusting abrasive held together by a flexible bond
- Serves as both commutator cleaner and burnisher
- Removes dirt and grease - imparts super finished



▶ **Brush Seater & Commutator Cleaner**

- For use in IDEAL precision grinders or any type of lathe-turning device
- Two resurfacers required for each grinder
- Available in five grades
- **X** = Extra Course - very fast cutting, for "hogging" off excess copper
- **C** = Course - fast cutting
- **M** = Medium - for general use, high mica, small ridges and burns
- **F** = Finish - for use after the three grades above, for periodic application and for removing small burns and ridges immediately after their appearance
- **P** = Polish - very fine grade for burnish finish



**Vibration Analyser** ▼

- Measure and Display Velocity, Acceleration & Displacement.
- 3200 line FFT capability.
- 20 kHz Fmax.
- 95 dB Dynamic Range
- MAS Vibration Analysis software.
- 8 MB Expanded Memory.
- Firmware upgradable via internet.



**Brush Pressure Meter** ▼

- Light, Compact and Easy to use.
- LCD display gives immediate reading direct from the brush/commutator
- Temperature rated upto 80 deg C
- 1 year guarantee.



**Commutator Profiler** ▼

- Measures and records linear displacement.
- Used on commutators, slip rings, rotors and shafts.
- Measures DC current.
- Proflash upgradeable firmware
- Built in charger and battery conditioner.
- Resolution down to 1 micron